

**ALMANAC:**

**Society for Pacific Coast Native Iris**



**Fall, 2009**

**Volume XXXVIII, Number 1**

## EXECUTIVE COMMITTEE

**President, Debby Cole**

7417 92<sup>nd</sup> Place SE, Mercer Island, WA. 98040

(206) 232-7745 e-mail: dcthree@juno.com

**First Vice President, Michael Monninger**

4861 Brookhill Terrace, Riverside, CA 92509

(909) 361-3177 e-mail: monninmd@sce.com

**Second Vice President, Bob Sussman**

12142 Alison Drive, Santa Rosa Valley, CA 93012

(805)523-8604 e-mail: matilija@gte.net

**Immediate Past President, Richard C. Richards**

5885 Cowles Mt. Blvd., La Mesa, CA 91942

(619) 464-2180 e-mail: mongo2u@cox.net

**Secretary-Treasurer, Terri Hudson**

33450 Little Valley Road, Ft. Bragg, CA 95437

(707) 964-3907 e-mail: irishud@earthlink.net

## COMMITTEE CHAIRMEN

**Editor, Gareth Winter**

64 Michael Street, Masterton, New Zealand

(00646) 377-5373 e-mail: wintergareth53@gmail.com

**Historian/Archivist, Richard Richards**

(See above for contact information)

**Recorder, Kenneth Walker**

1391 Santa Clara Ave., Concord, CA 94518

(925) 825-2350 e-mail: kenww001@astound.net

**Seed Distribution, Bob Sussman**

(See above for contact information)

**Slide Programs, Terri Hudson**

(See above for contact information)

**Trek Chairman, Position Open**

**Web Manager, Steve Ayala**

929 Pepperwood Lane, Petaluma CA 94952

e-mail: stevayla@sonic.net

## ALMANAC REPRESENTATIVES

**Canada, Joyce Prothero**

281 Cudmore Heights, Salt Spring Island

British Columbia V8K 2J7, Canada

(250)-537-9215 email: jprothero@saltspring.com

**Washington, David A. Pettenski**

3408 218<sup>th</sup> St. SE, Bothell, WA 98021

(425) 486-7705 e-mail: pettenski@hotmail.com

**Oregon, Kenneth Hixson**

88316 Thienes Lane, Springfield, OR 97478

(503) 747-4506 e-mail: khixson@nu-world.com

**Northern California, Position Open**

**Southern California, Michael Monninger**

4861 Brookhill Terrace, Riverside, CA 92509

(909) 361-3177 e-mail: monninmd@sce.com

**Central U.S., Louise Carson**

5037 NW 24<sup>th</sup> Place, Oklahoma City, OK 73127

(405) 947-1710 e-mail: nloucar@earthlink.net

**Eastern U.S., David Schmieder**

566 Old Road to NAC, Concord, MA 01742

(978) 369-3383 e-mail: ornacirises@verizon.net

The opinions expressed in articles and letters appearing in this publication are those of the authors and do not necessarily represent the views or beliefs of the SPCNI. Remarks about specific irises, companies, products and services shall not be considered endorsements by the SPCNI.

Fall 2009, Volume XXXVIII, Number 1

## PUBLICATIONS AVAILABLE FROM THE SPCNI TREASURER

Prices listed are for SPCNI members in USA.

**For out of USA, please add \$3.00**

### Check List of Named PCI Cultivars

Lists and describes Pacific Coast Native Iris and named

hybrids through 2005. ~70 pages. Hardcopy or CD: \$9.00

If ordering both, \$14.00.

### SPCNI Photo CD NEW! 2009

Compiled by *Ken Walker*. This CD includes 423 photos \$9.00.

### SPCNI Almanac CD NEW!

All the Almanacs through Spring 2007, with index, plus the 2005 Checklist. PDF format. \$15.

### A Guide to the Pacific Coast Irises

*Victor A. Cohen*: The British Iris Society 1967 Booklet, 5.5x

8.5, 40 pages, 16 line drawings, 8 color and 6 black-and-

white photographs. Brief descriptions of species and sub-

species including their distribution. \$8.00.

### A Revision of the Pacific Coast Irises

*Lee W. Lenz*: Photocopy of *Aliso* original. Booklet 5.5x8.5",

72 pages, 9 line drawings, 14 photographs and 12 maps.

Definitive work on the taxonomic status of the *Californicae*,

with a key to the species and sub-species. Detailed maps and

accounts of distribution. \$8.00 .

### Hybridization and Speciation in the Pacific Coast Irises

*Lee W. Lenz*: Photocopy of *Aliso* original. Companion

booklet to the above, 5.5x8.5", 72 pages, 30 figures, graphs,

drawings, and photographs. Definitive work on naturally

occurring inter-specific crosses of PCI, including detailed

account of distribution. \$8.00 If ordering both of Dr. Lenz'

booklets, \$14.00.

### Diseases of the Pacific Coast Iris

*Lewis & Adele Lawyer*: ALMANAC, Fall 1986. 22 pages, 9

b/w photographs. \$4.50.

### SPCNI SLIDE SETS

Two slide sets are available through SPCNI. They can be

obtained by requesting them from: Terri Hudson, 33450 Little

Valley Road, Ft. Bragg, CA 95437 (707) 964-3907. The charge

is \$7.50 for either of the two sets. The first set deals with

species: the second set is concerned with hybrids. **The**

**combination set is no longer available.** The slides in each set

will be contained in a Kodak carousel. The carousel will be

convenient to use and less likely to be damaged in shipment.

Payment (payable to SPCNI) should be sent to Terri Hudson.

The person requesting the slides is financially responsible for

return of the slides.

### ALMANAC

DEADLINES: March 15 and September 15.

**Back issues** are available for \$4.00 each, postpaid.

**Index** by Subject, Species, Hybrids or by Author, \$4.00 each

postpaid. (This is also on the web site to download free.) Contact

Terri Hudson at the address above.

**MEMBERSHIP AND SUBSCRIPTIONS**

The Society for Pacific Coast Native Iris is a Section of the American Iris Society (AIS). Membership in the AIS is recommended but not required for membership in the SPCNI.

**Membership**

Annual, hard copy	8.00
Triennial, hard copy	20.00
Annual, electronic copy	5.00
Triennial, electronic copy	13.00

Please send membership monies to the SPCNI treasurer. For foreign members, annual or triennial, please add \$4.00 per membership per year.

**IMPORTANT INFORMATION FROM THE SECRETARY/TREASURER**

**DUES NOTICES**

First dues notices will no longer be sent. Please note the expiration date of your membership on the address label. This date indicates the month and year that your SPCNI fees are due. We will continue to send you a final reminder notice if we have not heard from you in 90 days.

**AMERICAN IRIS SOCIETY**

Membership of the American Iris Society is not required for SPCNI membership. AIS membership is, however, suggested, and may be of considerable benefit. Send membership renewals or inquiries to the AIS Membership Secretary:

Tom Gormley  
 10606 Timber Ridge St.  
 Dubuque, IA 52001-8268  
 email: [aismemsec@earthlink.net](mailto:aismemsec@earthlink.net)

Annual	Single	\$25.00
	Dual	\$30.00
Triennial	Single	\$60.00
	Dual	\$75.00
Life	Single	\$450.00
	Dual	\$545.00

**Overseas rates:**

Annual	Single	\$30.00
	Dual	\$35.00
Triennial	Single	\$65.00
	Dual	\$80.00

**PLEASE ADVISE SPCNI AND AIS OF ANY CHANGE OF ADDRESS**

**TABLE OF CONTENTS**

**PRESIDENT’S MESSAGE Debby Cole .....3**

**FROM THE EDITOR Gareth Winter .....4**

**NEW CDS FROM THE SPCNI .....4**

**USING THE SPCNI 2009 PHOTO CD Ken Walker .....5**

**PACIFIC COAST IRIS SOURCES ..... 9**

**AMERICAN IRIS SOCIETY AWARDS ... 9**

**TREK 2010 REG. FORM .....10**

**AIS SPRING NATIONAL CONVENTION 2011 IN VICTORIA BC .....11**

***Iris tenax* AT SADDLE MOUNTAIN STATE PARK IN NORTHWEST OREGON Kathleen Sayce .....12**

**NEW PCI REGISTRATIONS .....13**

**2009-10 SPCNI SEED EXCHANGE .....16**

**NEW MEMBERS .....21**

**THE BLIND MEN AND THE IRIS? IRISES? .....22**

**POSITION OPEN .....22**

**SPCNI MEMBERSHIP LIST**

SPCNI is offering a listing of its membership to members for a slight fee to cover the cost of mailing and printing (approximately \$3.00 for the US, \$4.00 for out of U.S.). This list can be used only for contact purposes and cannot be used or sold as a business mailing list. Members wishing to be excluded from the list should contact the Secretary.

## From the President's Desk.... by Debby Cole

Greetings, fellow members and friends,

The AIS awards are out, and congratulations to Bob and Janet Canning on the Mitchell Medal for 'Mendocino Blue'! This was a seedling that the Cannings acquired from the Mendocino Coast Botanic Garden, and but for their vision (and a few well-deserved show awards) it might be just another plant in that garden today.

Special thanks go to Kathleen Sayce, who has taken over mailing our Almanacs. I say special, because if that weren't enough, she has also scanned all our past Almanacs through Spring 2007, an index to them, and the 2005 Checklist all onto a single CD. This is now available for \$15.00, out of USA \$18.00.

The SPCNI PowerPoint Presentation CD will also be soon available, perfect for a program for your club, or a nearby garden club, or---you decide! It covers where the species occur, what the different ones are and can look like, how PCI hybridizing started, the Mitchell Award and Mitchell Medal winners, PCI in the garden and landscape, and cultural information---and how to join us, of course. Watch the website for details.

Other new and exciting things are happening too. Registrar/Recorder Ken Walker has put together a new, expanded, updated Photo CD. It has twice as many photos as the old one, the species and the hybrids are in separate folders, and all are neatly framed and labeled. All this, for the same price as the old one: \$9 in USA, or \$12 out of USA. Send your money to Terri (until further notice).

Would you like to go paperless, and receive your Almanac electronically? Thanks to a few early volunteers, we think we have the bugs out of this one. To go with it, we offer a new subscription rate for electronic delivery: \$5 for one year, or \$13 for 3 years. You are welcome to convert to electronic delivery anytime (just let Terri know), but the new rate comes only with new or renewal membership. The Almanac will come as a PDF file, so you'll need the Adobe Reader (available free online) and we recommend a Gmail account with Google (also free), as the file may be 7-8 MB.

More good news! In this time of tight budgets, the American Iris Society has voted to offer a money stretcher, and the Sections have joined in. If you are not an AIS member, or currently have only an annual membership, and decide to sign up for a triennial AIS membership between October 1, 2009 and September 30, 2010 together with a triennial membership in one or more AIS Sections (like SPCNI), you get four years of membership in all for the price of three years in all. Now if AIS isn't your pot of tea, but you'd still appreciate a good deal, here's our exclusive: buy any kind of triennial membership in SPCNI – electronic, or domestic or foreign postal delivery – and you get the new, expanded updated Photo CD as a bonus.

Now, with all the money you're saving, you can afford the best thing of all ----- SPCNI Trek 2010, June 14-15, headquartered in Roseburg, OR. Yes, that's right, it's on Monday and Tuesday – you need a vacation, right? – following the Spuria Convention in Portland on Saturday and half of Sunday. Roseburg is a 3-4 hour drive south of Portland on I-5, and it's beautiful in June. We'll spend two days in small agile buses up in the hills, seeing chrysophylla, tenax and hybrids between, and innominata and its hybrids with tenax. The geology and the wildflowers are outstanding, and we hope there will be a few specialists on board who would like to enrich our experience with their expertise. No formal banquets are planned, just dinner in local restaurants with whoever wants to go. The Windmill Inn of Roseburg, just off I-5 and a past haven for SPCNI treks, is hosting us again – bring your bathing suit! Further information and the registration form are in this issue, and will be reprinted in the spring Almanac if Trek space remains. Limit: 48.

If winter is coming, get those new PCI in the ground (and mulched if necessary) and get those seeds planted. If your irises are starting to bloom now, have a great season, and take lots of excellent photos to put on the website.

My best regards to you all,

Debby

## News from the Editor's Desk by Gareth Winter

It has been a very interesting season for our many New Zealand members. Unlike the majority of you who are entering the hibernation phase of the year, we are springing into the growing season – I have flowers aplenty in the seedling beds.

But we have had a very unusual winter. A cold start was followed by sustained cool periods over the bulk of winter, but as winter tailed off we had an extended warm spell.

It fooled lots of plants into premature growth including many of my PCIs, some of which were budded up nearly a month earlier than usual. We were then hit by a number of bad frosts, and all the PCI buds were flattened.

It was a sad sight, especially among the many seedlings that were due to flower for the first time. But it did confirm something I had come to suspect over the past few years. At the start of each season I find a large number of flowers that open normally, but then drop to the ground and lie flat on the soil. Close inspection invariably discloses stems that are flattened and fatally weakened at a point some distance below the bud.

I had concluded that the problem was being caused by frost, and the bad frosts of early September confirmed my diagnosis, as literally every budding stem was wiped out. A few hours after the frost I could see the flattened stems falling over and lying flat along the bark, or draping themselves over the foliage. Interestingly enough, the buds themselves were not damaged, and I was able to open some of the advanced first bloom seedlings to see what the flowers were going to be like.

It has all steeled my resolve to continue breeding for late flowering – in our climate early flowering plants are going to get hit by frost too often. I have pricked out too many seedlings this year (again) and still threw hundreds of seedlings away, so I will have the luxury of being able to select for lateness when the plants first flower in 2011.

It seems to me New Zealand's seasons are more irregular than before; we have colder winters, warmer summers, and more unseasonal 'weather events', as our forecasters like to call them. It seems to be caused by climate change, which is a worry for us all in many ways. As PCNI fans, we must be concerned about the potential for widespread habitat loss in the wild for our favourite species. They will potentially be forced up higher in latitude and altitude, and some outlying populations may not be able to cope with change. It is an issue we all need to think about.

All the best,

Gareth

## New CDs from the SPCNI

The SPCNI has released two new CDs that will prove invaluable to aficionados of Pacific Coast irises. Registrar/Recorder Ken Walker has put together a **new, expanded, updated Photo CD** with twice as many photos as the old one. The species and the hybrids are in separate folders, and all are neatly framed and labeled. Price: \$9, or \$12 out of USA.

If you are interested in having a complete set of SPCNI Almanacs, we have a great deal for you. Kathleen Sayce has compiled a very useful resource by scanning **all copies of the Almanac through Spring 2007**, the companion Index, and the Checklist through 2005, all in PDF format on a CD. The old Almanacs are a treasure trove of information and it is now possible for us all to have a handy set of them available. Price: \$15, or \$18 out of USA.

## Using the SPCNI 2009 Photo CD by Ken Walker, SPCNI Recorder

This spring, SPCNI published its second photo CD. We have labeled this one “PCN Promotional Photos May ‘09”. We have expanded from 252 cultivar photos and 10 species photos to 361 cultivar photos and 62 species photos. In addition, all the photos have been resized and formatted as “slides” with captions.

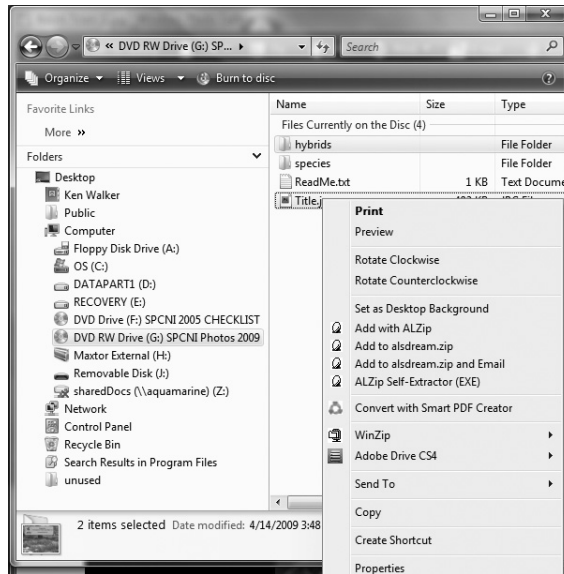
Here are a couple of examples, converted from color to grayscale for printing in this article.



We also created a title slide for the CD.



On a Microsoft Windows Vista computer, I can run a slide show directly from the CD as follows. After inserting the CD, I open it in Windows Explorer. If I want a cultivars slide show, I select Title.jpg and the hybrids folder. With my mouse over Title.jpg, I right click using the mouse and select “preview” as shown:



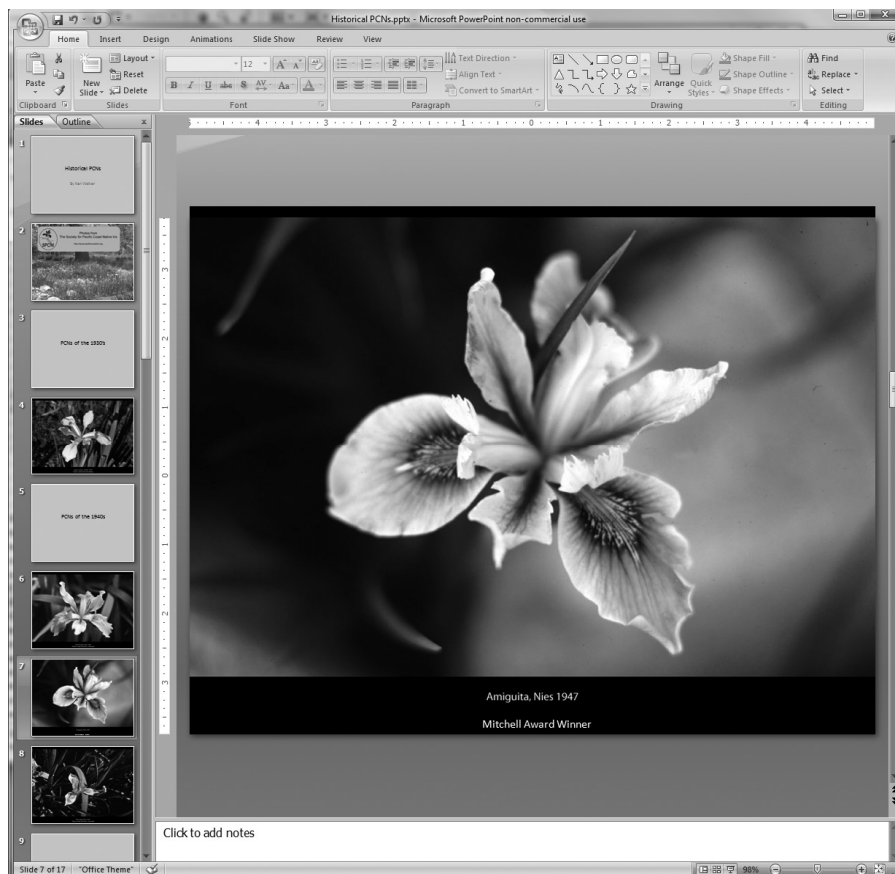
This brings up the Windows Photo Gallery program. The button in the middle of the bottom of Photo Gallery lets me start a slide show. If I also selected the species folder, those photos will be included in the slide show. The CD can also be used directly for slide shows using other programs and other computer systems, but details will vary somewhat.

By connecting your computer to a projector, you can use the slide show as a long program for a meeting. You can also run it in a loop on a laptop as an educational display at an iris show.

This CD is intended to be used for multiple purposes such as personal enjoyment, illustrating articles, and labeling plants for sale. As a slide show, it is very long and not very sophisticated. I encourage people to use the photos to create smaller slide shows with more specific goals to show at their clubs. For example, you could create slide shows that focus on the development of specific forms, colors, and/or patterns. You would select photos that best illustrate what you are trying to get across, and present them in the best order for your program.

As an example, I will create a slide show of historic PCNs using Microsoft PowerPoint. My first task is to browse through the photos, taking notes on photos I may want to include in my slide show. In order to keep my exercise small, I narrow my list down to iris more than 50 years old. I come up with the following 12 photos 1939 – ‘Agnes James’, 1943 – ‘Orchid Sprite’, 1947 – ‘Amiguita’, 1947 – ‘Blue Sage’, 1953 – ‘Morning Fairy’, 1955 – ‘Claremont Indian’, 1956 – ‘Come Spring’, 1957 – ‘Ami Royale’, 1958 – ‘Greenbriar Contrast’, 1959 – ‘Ojai’, 1959 – ‘Valley Banner’, 1959 – ‘Violet Elf’.

I do some research by consulting the SPCNI checklist and find that both ‘Amiguita’ and ‘Ojai’ are Mitchell Award winners. I could do further research to determine other awards, parentage, number of registered offspring, facts about hybridizers, etc. I am now ready to start creating the PowerPoint slide show. I create a title slide, “Historical PCNs by Ken Walker”. I set the background to pale green to make it less stark. I then add second slide, selecting a blank layout, and insert the SPCNI Title image. I expand the image a little to fill the slide. Next I add a title slide “PCNs of the 1930’s” followed by a blank slide with a black background. Into this, I insert the photo of ‘Agnes James’. I repeat the process with the three photos from the 1940s and the eight photos from the 1950s. Finally, I label the two Mitchell Award winners. I add text boxes to the bottoms of the photo pages and adjust the placement of the pictures as needed:



I hope this simple example inspires people to create their own presentations.



Now for a sneak peak into the future. We will have even more photos to distribute. I am currently scanning the Lewis and Adele Lawyer slide collection, which contains lots of wonderful photos of PCNs. It is particularly helpful in having many photos of older varieties. At the other end of things, this summer I have built a 4' x 18' PCN bed reserved mostly for newer introductions. This will give me a chance to photograph them in bloom; photography is a second hobby. I grow all kinds of iris including more than 100 species; this position in SPCNI is dragging me (quite happily) deeper into the PCN part of the iris world. Expect another updated CD in a few years.

## Pacific Coast Iris sources

**Aitken's Salmon Creek Garden**, 608 NW 119<sup>th</sup> St., Vancouver, WA 96985. (360) 572-4472, fax (360) 576-7012, website [www.flowerfantasy.net](http://www.flowerfantasy.net), e-mail: [aitken@flowerfantasy.net](mailto:aitken@flowerfantasy.net). Catalog is \$3.

**Bay View Gardens**, 1201 Bay Street, Santa Cruz, CA 95060. (831) 423-3656 (call after dark, Pacific Time) fax (832) 423-7610, e-mail [ghiobayview@surfnetusa.com](mailto:ghiobayview@surfnetusa.com). Catalog is \$3.

**Wildwood Gardens**, 33326 S. Dickey Prairie Rd. PO Box 250, Molalla, OR 97038-0250. (503) 829-3102, email: [gardens@molalla.net](mailto:gardens@molalla.net). Catalog is \$3 – includes color pictures of PCI.

**Broadleigh Gardens**, Bishop's Hull, Taunton, Somerset, TA4 1AE, England, website: [www.broadleighbulbs.co.uk](http://www.broadleighbulbs.co.uk) (EC sales only)

**Maritima Mail Order Nursery**, 2 Worcester Street, Hampden, North Otago (New Zealand sales only)

**Cascadia Iris Gardens**, PO Box 2520, Woodinville, WA 98072-2520. (425)-770-5984,

e-mail: [Patrick@CascadiaIrisGardens.com](mailto:Patrick@CascadiaIrisGardens.com), website: <http://www.cascadiairisgardens.com/default.asp>

**Pacific Rim Native Plant Nursery**, Paige and Pat Woodard, 44305 Old Orchard Road, Chilliwack, BC V2R 1A9, Canada. (604) 792-9279, fax (604) 792-1891, website: [www.hillkeep.ca](http://www.hillkeep.ca). PCI species. Mail order worldwide. No printed catalog. Garden and nursery visits by appointment.

**Sunshine and Dirt**, Heidi Blyth, P.O.Box 1097 Pearcedale, Victoria 3912, Australia. 0359-786-980, fax 0359-786-980, email [heidib333@hotmail.com](mailto:heidib333@hotmail.com).

## American Iris Society Awards 2009

### THE SYDNEY B. MITCHELL MEDAL

(Total votes cast = 45)

13 MENDOCINO BLUE (R. & J. Canning)

Runners Up:

12 STAR OF WONDER (Joseph Ghio)

8 MOCHA MELODY (Alphild Lind)

8 RANCHO CORRALITOS (Joseph Ghio)

### AWARD OF MERIT

(Total votes cast = 77)

10 BAR CODE (Joseph Ghio)

8 DOT THE EYES (Joseph Ghio)

Runners Up:

7 ADMIRAL'S PRIDE (Vernon Wood)

7 ENGLISH ROSE (Joseph Ghio)

7 OCEAN BLUE (Joseph Ghio)

7 STEAMER LANE (Lois Belardi)

6 DIFFERENT STROKES (Joseph Ghio)

### HONORABLE MENTION

(Total votes cast = 110)

10 RODEO GULCH (Joseph Ghio)

7 CHALK HILL ROAD (L. W. Beeman, deceased, by Anna & David Cadd)

6 SUNOL GRADE (Joseph Ghio)

5 VIOLET VIXEN (Vernon Wood)

5 BATTLE LINE (Joseph Ghio)

5 JOLON (Joseph Ghio)

Runners Up:

4 SEEING EYE (Joseph Ghio)

4 PINOLE PRINCE (V. Wood by T. Hudson)

4 LITTLE SURVIVOR (Elena Laborde)

4 AROUND THE BAY (Joseph Ghio)

**COPY THIS PAGE!**

**SEE PHOTOS PAGE 26.**

## SPCNI Trek 2010

SPCNI will sponsor a Trek in SW Oregon on Monday and Tuesday, June 14-15, 2010. It will be headquartered at The Windmill Inn in Roseburg, about a 3-hour drive south on I-5 from Portland. Buses will depart the hotel at 8:30 am and return by 5 pm each day.

Participants will see *innominata*, *innominata-tenax* hybrids, *tenax*, *tenax-chrysophylla* hybrids, and *chrysophylla*, plus exciting geology and lots of other wildflowers. No banquet or program is planned; dinner space will be reserved at local restaurants.

Deadline for registration is May 1, 2010, and registration is limited to 48 participants. If you're in search of roommates, please say so and specify number of roommates desired. The registration fee includes excellent box lunches for both days.

Trek leaders Jean Witt and Debby Cole welcome interested SIGNA members, Native Plant Society members and friends to a maximum of 48 participants.

Registrations should be sent to:

Terri Hudson, Trek Registrar  
33450 Little Valley Road  
Fort Bragg, CA 95437

phone: (707) 964-3907  
email: [irishud@earthlink.net](mailto:irishud@earthlink.net)

---

### Yes, I want to Trek with SPCNI in 2010

(name) \_\_\_\_\_

(address) \_\_\_\_\_

(phone) \_\_\_\_\_ (email) \_\_\_\_\_

### and so does my friend:

(name) \_\_\_\_\_

(address) \_\_\_\_\_

(phone) \_\_\_\_\_ (email) \_\_\_\_\_

### I enclose a check for \$105.00 per person.

(The above information will not be sold, traded or disclosed to outsiders)

### Please inform SPCNI of any dietary restrictions.

Contact The Windmill Inn for reservations, 1-451-673-0901 or [rosgm@windmillinns.com](mailto:rosgm@windmillinns.com) and be sure to mention SPCNI. Our group rate will be \$78.40 per night, which includes a generous continental breakfast.

\*\*\*If you would be willing to be a driver of a 12 passenger van, please contact Terri. Your registration fee will be waived.

\*\*\*Biologists/Botanists: If you would like to share your expertise on the companion wildflowers we see, please let us know here.



## **Iris-istible Victoria, 2011** **AIS Spring National Convention**

by Kate Brewitt, 2011 Convention Publicity Chair ([justonemoreiris@yahoo.ca](mailto:justonemoreiris@yahoo.ca))

For the first time in 56 years the AIS Spring National Convention will take place in Canada; in Victoria, BC from May 29 to June 3, 2011. Our hosts will be the British Columbia Iris Society (BCIS). Mark your calendars and plan on attending as it's sure to be an 'iris-istible' event!! The Convention Committee has put together a wonderful selection of guest gardens in which to host the almost 1,500 guest irises received from various hybridizers in the USA, Canada, Slovakia and England. The club has spent the last two summers diligently planting these irises, receiving tremendous support from the staff of the gardens along the way. As an added bonus, for the first time since 2006, there will be a small selection of guest PCIs from Joyce Prothero (Canada) and Terry Aitken (USA) plus two PCI display gardens.

To pique your interest, here's a brief description of each of the Guest Gardens.

**Finnerty Gardens** is located on the grounds of the University of Victoria. One of Canada's best collections of rhododendrons is found on display here. Also on display are more than 4,000 different trees and shrubs, and a spectacular range of ferns, vines, bulbs, groundcovers and ornamentals artistically displayed on a 2.6 hectare (6.5 acre) site. The gardens have been carefully planned and developed to provide a rich and changing array of colour, scent, form and texture all year found. Some of the PCI Guest irises have been planted here.

**Glendale Gardens and Woodland** is operated by the Horticulture Centre of the Pacific Society. Located in the Municipality of Saanich on southern Vancouver Island, this peaceful rural site includes 103 acres of land leased from the provincial government and features demonstration gardens and a conservation park. One of the PCI display gardens is located here.

**Government House Gardens** are located on the grounds of the home of the Lieutenant Governor who is the representative of Her Majesty the Queen of Canada in the Province of British Columbia. The Government House grounds embrace 14.6 hectares (36 acres), including 8.9 hectares (22 acres) of a rare Garry Oak ecosystem, and 5.7 hectares (14 acres) of formal gardens. The site is a popular attraction for Victoria residents, visitors, and tourists alike. Thanks to the time and expertise of dedicated volunteers and The Friends of Government House Gardens Society, the grounds are a well-utilized, much-treasured greenbelt for the community. Guest PCI irises and a display garden are planted here.

**Hatley Park Gardens** are located on the grounds of Royal Roads University. Designated a National Historic Site, Hatley Park is one of the few Edwardian estates in Canada with its key structural elements intact. At the heart of the property is Hatley Castle. The site features hundreds of heritage trees significant for their size, rarity and diversity, including 250-year-old Douglas firs that are among the largest in the area. The showpieces of the park are generally considered to be the formal gardens of which the Italian, the Rose and the Japanese gardens are the best known. The Convention Master Planting is to be found here.

The convention hotel has yet to be confirmed. However, rest assured; we are looking at one that will meet the needs and comforts of our conventioners. The usual meetings and banquets are planned along with a special tour for everyone to Butchart Gardens. Plan now to attend, to learn and to enjoy, this special BCIS event. Information will be published in future AIS material as it becomes available. More details can be found on the BCIS website, <http://www.bc-iris.org/>, or on the AIS Region 16 website, <http://sites.google.com/site/aisregion16/Home>.

**(Ed. Note: see photos on page 25.)**

## ***Iris tenax* at Saddle Mountain State Park in Northwest Oregon**

by Kathleen Sayce, June 24, 2009

Tough-leaved iris, *Iris tenax*, has a wide geographic range on the West Coast of North America. It grows from northern California to southwest Washington, from the coast to the Cascade Range. Growing on partly shady to sunny moist hillsides from sea level to several thousand feet in elevation, this iris is the most northerly of the Pacific species, reaching low hills along the Chehalis River in southwest Washington.

Tough-leaved iris was so named for its fibrous leaves, used to make ropes and for weaving mats and other items, and may have been planted by Indians to keep a supply of useful fiber plants growing near villages. The most northerly specimens collected near present-day towns of Chehalis, Elma and Montesano, Washington are all on the Chehalis River, and near historic Indian villages. South of these sites, the iris grows more widely in what are probably natural sites in the Cascade Range, Willapa Hills, and Coast Range.

Along the coast in northwest Oregon, tough-leaved iris can be found from ocean bluffs to Coast Range mountaintops. It typically grows in sunny, open sites where soils are moist in spring and fall, and may dry out for part of the summer. One of the curious climate combinations of this region is that while western Washington and Oregon are considered to be within the coastal temperate rainforest biome, they are also considered to be within the cool Mediterranean biome. The fall through spring seasons are wet, and summers are dry. Those dry summers result in grassy meadows on rocky bluffs and mountaintops, where trees and shrubs cannot grow. The meadows are home to more than a hundred wildflower species, and among the most outstanding of these are many found on Saddle Mountain.

Saddle Mountain is one of the taller peaks in the Coast Range, in Clatsop County, Oregon. The basalt rock of the peak is part of the great Miocene flood basalts of eastern Oregon and Washington, which also make the Columbia River Gorge, a steep-sided deep canyon where the river crosses the Cascade Range. The access road to the trailhead at Saddle Mountain is north of Highway 26, 10 miles east of Seaside, Oregon; the road is paved, and reasonable to drive with caution; it is about seven miles long and ends at the trailhead where there is parking, camping and a restroom. The trail winds uphill from the parking lot (1,800 ft, 550 m) for 2.5 miles to the highest peak, which is 3,288 ft (1002 m) high. There are extensive meadows on the upper slopes, and numerous small meadows, rock garden walls and talus openings along the trail. It is not an easy walk, rising 1,500 feet over those 2.5 miles. Some sections are very steep. I recommend stout walking boots, hat, sun block, water, and at least a hearty snack if not lunch and two snacks. Also bring binoculars, and a wildflower field guide, and unless the weather forecast is for perfectly dry weather (and you believe the forecaster), raingear.

Flower color in this iris population ranges from light purple to pink; plants typically flower in June. This population tends to have darker uprights and lighter, veined falls, as seen in the figures. Irises grow along the trail starting at about 2,400 ft (735 m) in elevation, in grassy spots among wetter forested areas below the upper rocks of the high peaks. The best spots to view irises are along the trail in open areas from mile 1 to around mile 2. This section of trail winds among several rocky outcrops, rock dikes, and talus slopes, some with wet seeps; in the meadows between the rocks are the best populations of irises.

Saddle Mountain has several endemic plant species, and is known for its botanical diversity. I have hiked this mountain several dozen times since the early 1980s, and still find new native species every year. Other species to be seen include: Menzies' larkspur, Columbia larkspur, smooth Douglasia, rosy Lewisia, nodding onion, Olympic onion, Columbia lily, spreading phlox, Cardwell's penstemon, woolly groundsel, copperbush, hairy paintbrush, alp lily, several Erythroniums, and too many Saxifrages to list here.

This mountain has a long flowering season, with choice species in bloom from April to August in typical years. The peak bloom period is usually June, but by then many rare early flower species are done for the year, and the mid to late season flowers are yet to open. Clearly, to see most species, one must visit several times during the growing season. It is a good location for butterflies during warm weather, when butterflies tend to accumulate on Coast Range peaks. At the top, the added bonus on clear days is sighting several Pacific Northwest mountains, including Rainier, St. Helens, Adams and Hood in the Cascade Range, and the Olympic Mountains. Local features are also seen on clear days, including Tillamook Head, Pacific Ocean and Columbia River, and other mountains in the Coast Range, such as Humbug, Sugarloaf, Onion and Angora Peak.

On two recent visits, I saw tough-leaved iris in full flower. The first trip, on June 13, 2009, was in typical coastal weather: damp to wet on the way up as we walked in clouds, and then sunny on the return trip midday when the clouds burned off. I prefer cloudy weather for photographs, and took these (Figures 1, 2) on the outward trip. The sunshine at midday brought out butterflies; we saw Moss Elfins, Anise Swallowtails and Veined Whites, and a profusion of Western Meadow Fritillaries, which are very abundant on the West Coast this year. If we had gone to the top, and the sunshine was out, we might have seen Great Arctics, which have flying adults every other year, each generation taking two years to go from egg to adult. The Great Arctic population flies only during odd-numbered years on Saddle Mountain, unlike other Pacific Northwest populations, which fly in even-numbered years. But wind and rain turned us back at mile 2, in the largest meadows along the trail. We saw all the butterflies on the way back down.

The second trip was two days later, on June 15, 2009. The weather forecast was identical to the prior trip, but instead of clouds and rain we had light clouds followed by clear skies and bright sun. This time I was with a group that was exploring alternate routes to meadows on the west to north side of the mountain. We scrambled up over rubble-strewn slopes until the way was too steep and treacherous to continue. Our reward was to find a steep slope blanketed with iris (Figure 3), and wild cucumber. We also found a lovely purple-flowered population of western mountain-bells, and three or four large clumps of western coneflower. Rather than slide down the rubble slope, we climbed into a rock gully that was almost dry, and climbed (and slid) down the gully. We found a nice clump of Merten's saxifrage, growing with Columbia larkspur, and a delicate small lady-fern on the sheer basalt walls. This fern might be alpine lady-fern; it's in the press drying, so I will confirm it in a few weeks. Nodding onion was just coming into flower, and one of our group could not resist trying a leaf; note to self: like garlic, if one person eats it, so must all the rest! The climb back down was fragrant with onion breath. I was particularly pleased to confirm the identity of a perennial flower that we had seen several years before (without flowers, after elk had munched on the tops), which has leaves dissected into long filaments. On this trip we confirmed the presence of nine-leaved desert parsley, *Lomatium triternatum*, which we saw in a glade below the cliffs, and on the cliffs as well. This is a new plant species for Saddle Mountain, and I will be adding it to the list for the park on my website soon.

As a botanist, climbing this mountain is always humbling; I hike hoping to see everything, and come back down every time feeling that my brain has overloaded on images, names, and locations. And this is just the plants! There are also birds, butterflies, amphibians, sedges, lichens, fungi, liverworts, mosses --- too many species, too little time.

For a PDF list of plants known to grow on Saddle Mountain, less nine-leaved desert parsley, go to [users.reachone.com/columbiacoastplants](http://users.reachone.com/columbiacoastplants), and navigate to northwest Oregon and Saddle Mountain.

## New PCI registrations

**AMHERST AMELIA RUBY** (Thelma Naylor, R. 2007). Sdlg. C3/1. CA, 12.5" (32 cm), EM. S. pale old rose (RHS 181D), veined deeper; style arms pale old rose; F. rosy copper (181A), deeper around yellow signal. Amherst Jo X unknown.

**AMHERST JO** (Thelma Naylor, R. 2007). Sdlg. G9/1. CA, 11" (28 cm), EM. S. deep mauve veined purple, bronze line at throat; style arms mauve, lighter center; F. deep velvety violet (RHS N81A) veined purple, paler rim, deeper (79A) around faint bronze signal. Parentage unknown, seed from Ghio.

**AREA CODE** (Joseph Ghio, R. 2007). Sdlg. GP-360W3. CA, 14" (36 cm), ML. S. white, light blue feathering in center; F. white, overall blue lines radiating from yellow signal giving halo effect. EP-208W: (CP-108U, Clincher sib, x unknown) X EP-153CZ: (Ocean Blue x Star of Evening). Bay View 2007.

**BACK ROW GOLDEN GIRL** (Mary Barrell, R. 2008). Sdlg. BR/MLP01/6. CA, 13" (34 cm), E. S. gold, light brown center stripe; style arms gold; F. same washed light maroon fading to gold at edge, light purple veins, signal gold, white at end, all heavily spotted light purple creating rounded halo effect. Ghio sdlg. X Starshine Bright. Barrell 2008/09.

**BACK ROW TUTU** (Mary Barrell, R. 2008). Sdlg. BR/MLP01/2. CA, 19" (48 cm), E. S. pale lemon, several pale mauve veins; style arms pale lemon; F. same washed mauve, mauve-brown veining, color deepest around

signal fading to pale lemon at edge, signal small rounded white halo, mauve spots and stripes. Ghio sdlg. X Starshine Bright. Barrell 2008/09.

**BAND OF SHOWERS** (Joseph Ghio, R. 2008). Sdlg. HP-137-1. CA, 11" (28 cm), EM. S. blue violet; style arms pale blue; F. white, precise blue-violet dotting on edge, lighter solid hairline rim. FP-249L, Public Eye sib, X FP-263S, Like Clockwork sib. Bay View 2008.

**BAY STREET** (Joseph Ghio, R. 2008). Sdlg. HP-128G. CA, 12" (30 cm), EM. S. and F. white base, blue purple wash and lining overall; purple signal. FP-265T: (Bar Code x Lash) X Around the Bay. Bay View 2008.

**BLAZING SPEED** (Duane Meek by William Plotner, R. 2008). Sdlg. MPC-C1-1. CA, 14" (36 cm), ML. S. phlox purple, blue wire edge, lighter center veined indian purple; style arms venetian pink edged and feathered phlox purple, phlox purple center stripe; F. caprice mauve veined dark indian purple, blue wire edge, golden corn veined dark indian purple signal; lightly ruffled. 55-15, unknown, X unknown.

**CANYON BLISS** (Dara Emery, deceased, by Carol Bornstein, R. 2007). CA, 10" (25 cm), M. S. violet (RHS 85C), hint of yellow at throat, darker purple veining, slight turquoise flush; style arms violet (88D); F. white overlaid with purple veins becoming 10 mm. wide violet band (87D) at edge, signal circular yellow veined purple, central vein forming pale yellow streak to edge. Canyon Snow X Claremont Bluebird. Santa Barbara Botanic Garden 2006.

**CANYON SUNSHINE** (Dara Emery, deceased, by Carol Bornstein, R. 2007). CA, 10" (25 cm), M. S. chrome yellow (RHS 15C/D), faded edges, occasional light brown veins up center; style arms (15C/D); F. (15C), light brown veins extending to edge, circular indian yellow (17B) ring signal. Canyon Snow X Canyon Gold. Santa Barbara Botanic Garden 2006.

**CASHING IN** (Joseph Ghio, R. 2008). Sdlg. HP-125Y2. CA, 12" (30 cm), ML. S. and F. bright gold; faint tan dotted signal. FP-216J2: (DP-203S, Jolon sib, x Weather Eye) X FP-281-I: (CP-81Q: (Different Strokes x Magic Carpet Ride) x DP-255G2, Rodeo Gulch sib). Bay View 2008.

**CHARLESTON BLUE MOON** (Colleen Modra, R. 2008). Sdlg. JG-30. CA, 10" (26 cm), M. F. cream washed and veined rosy lavender, blue halo around 6 yellow veined signals, yellow veining continuing down center; flat form. Parentage unknown, seed from Joe Ghio.

**COLOR OF MONEY** (Joseph Ghio, R. 2007). Sdlg. GP-362P2. CA, 9" (23 cm), ML. S. and F. brilliant gold, F. dusted light tan. EP-213B, Wild Pitch sib, X (CP-110J, Lines that Rhyme sib, x CP-108L, Clincher sib). Bay View 2007.

**EARLY DAYS** (Joseph Ghio, R. 2008). Sdlg. HP-157K3. CA, 10" (25 cm), ML. S. and F. silvery lilac; circular dime size purple signal. EP-189P: (CP-96L2: (PA-97P: (Jacks Are Wild x Playbook) x AP-299N, Pretty Boy sib) x CP-131Q: (Oxymoron sib x Laureles sib)) X Bowl of Fluff. Bay View 2008.

**FIREFLOW** (Joseph Ghio, R. 2008). Sdlg. HP-144F2. CA, 12" (30 cm), ML. S. black red; style arms brassy gold; F. black red, hairline ochre band. FP-260P, Sizzling Pitch pod parent, X Now Showing. Bay View 2008.

**FIREWORK DISPLAY** (Joseph Ghio, R. 2007). Sdlg. GP-366#. CA, 10" (25 cm), ML. S. gold, red overlay; F. gold, red lining and overall dotting; gold signal. EP-220I4: (CP-110J, Lines that Rhyme sib, x CP-107T, Jabberbox pollen parent) X EP-211U4, Eye Catching sib. Bay View 2007.

**FOGGY DAYS** (Joseph Ghio, R. 2007). Sdlg. FP-265E2. CA, 10" (25 cm), ML. S. white tinted blue; F. white lined blue-violet overall to distal edge, dark blue-violet signal. Bar Code X Lash. Bay View 2007.

**GIN AND TONIC** (Joseph Ghio, R. 2007). Sdlg. GP-343D3. CA, 10" (25 cm), ML. Ochre gold self, signal blue-purple in throat lightening to blue in center of F. (((Common Sense sib, x ((Battle Alert x Common Sense pollen parent) x ((Old Monterey sib, x ((Running Wild x Moraga sib) x PL-230-J3: (San Gregorio x (Montara sib, x Mission Santa Cruz sib))) x (PL-230-D x Latin Blood))) x (Old Monterey x PI-MIX-S)))) x (Spreadsheet sib, x Face Value sib) x ((Common Sense sib, x Umunhum sib) x Face Value sib) X ((Eyes of Blue sib, x Pretty Boy sib) x ((Cross purpose sib, x (Charter Member sib, x Eye Patch sib)) x (((PI-MIX-A x Mission Santa Clara sib) x (MIX-Y x PI-MIX-A)) x Adept sib) x (Baby Blanket pollen parent, x sib to Bedroom Eyes pollen parent))). Bay View 2007.

**GO GLORIA** (Mary Barrell, R. 2008). Sdlg. GRS 3. CA, 12" (31 cm), EM. S. and style arms gold; F. same heavily veined red-brown, red-brown signal. Ghio sdlg. X G. Rapson sdlg. Barrell 2008/09.

**IRWELL CALYPSO** (Ron Busch, R. 2008). Sdlg. X-2000. SPEC-X (cal-sib), 36" (91 cm), L. S. lemon veined red violet; style arms lemon, red violet midrib and tip; F. gold veined red violet, lemon margin. Parentage unknown. Te Ohanga 2008/09.

**IRWELL CAMEO** (Ron Busch, R. 2008). Sdlg. H-2000. SPEC-X (cal-sib), 36-38" (91-97 cm), L. S. white veined plum; style arms plum center, gold edge, white lip; F. light cream veined plum, gold blush down center, white edge. Parentage unknown. Te Ohanga 2008/09.

**IRWELL CARNIVAL** (Ron Busch, R. 2008). Sdlg. B-2000. SPEC-X (cal-sib), 36" (91 cm), L. S. lavender; style arms same flushed cream; F. lavender, cream white rays extending from base of petal. Parentage unknown. Te Ohanga 2008/09.

**IRWELL CAROUSEL** (Ron Busch, R. 2008). Sdlg. D-2000. SPEC-X (cal-sib), 36" (91 cm), L. S. and style arms lavender; F. deeper lavender, yellow shoulders, white ray pattern. Parentage unknown. Te Ohanga 2008/09.

**IRWELL COMMENTARY** (Ron Busch, R. 2008). Sdlg. A/1 2000. SPEC-X (cal-sib), 36-38" (91-97 cm), E. S. off white veined plum purple; style arms yellow veined plum purple, off white tips; F. yellow white veined plum purple, yellow flush on shoulders and down center. Parentage unknown. Te Ohanga 2008/09.

**IRWELL FASHION** (Ron Busch, R. 2008). Sdlg. T-2000. SPEC-X (cal-sib), 36" (91 cm), L. S. pale blue veined violet; style arms buff yellow, violet center and lip; F. cream white veined violet, gold down center, off-white edge. Parentage unknown. Te Ohanga 2008/09.

**IRWELL HAVEN** (Ron Busch, R. 2008). Sdlg. Y 2000. SPEC-X (cal-sib), 36-38" (91-97 cm), E. S. off white veined violet; style arms plum red, yellow tip and edge; F. pale gold overlaid deep gold down center, plum red plicata veining, off white edge. Parentage unknown. Te Ohanga 2008/09.

**IRWELL INSPIRATION** (Ron Busch, R. 2008). Sdlg. U2000. SPEC-X (cal-sib), 36-38" (91-97 cm), E. S. cream veined violet; style arms violet, cream edge; F. cream veined plum, gold overlay down center, cream edge. Parentage unknown. Te Ohanga 2008/09.

**IRWELL REPORT** (Ron Busch, R. 2008). Sdlg. A/2 2000. SPEC-X (cal-sib), 36-38" (91-97 cm), E. S. and style arms violet; F. same, yellow rayed spot signal. Parentage unknown. Te Ohanga 2008/09.

**IRWELL SHRINE** (Ron Busch, R. 2008). Sdlg. G 2000. SPEC-X (cal-sib), 36-38" (91-97 cm), E. S. white veined purple; style arms purple tipped off-white; F. white heavily veined plum, yellow gold up center to heart. Parentage unknown. Te Ohanga 2008/09.

**IRWELL STYLE MASTER** (Ron Busch, R. 2008). Sdlg. C 2000. SPEC-X (cal-sib), 36-38" (91-97 cm), E. S. off white flushed cream, plum purple veining; style arms plum tipped cream, deeper veins; F. light yellow flushed gold down center, plum veining, white edge. Parentage unknown. Te Ohanga 2008/09.

**KARAPIRO BLUE LAKE** (Mary Barrell, R. 2008). Sdlg. GS/BB/01. CA, 18" (46 cm), EM. S. white shading steadily upward to blue purple, white midrib; style arms white, midrib and top blue purple; F. dark blue-purple, white signal striped gold, white center stripe. Ghio sdlg. X Ghio sdlg., parentage unknown. Barrell 2008/09.

**KARAPIRO SUNSHINE** (Mary Barrell, R. 2008). Sdlg. BR/MLP01/3. CA, 18" (46 cm), E. S. lemon, 5 gold veins in center; style arms lemon; F. same veined gold. Ghio sdlg., parentage unknown X Starshine Bright. Barrell 2008/09.

**LOVE IS KIND** (Ted Howse, R. 2007). Sdlg. TH-01-PCI-1A. CA, 12" (30 cm), M. S. very pale purple (Nickerson 7.5P 9/2), 3 light purple (7.5P 7/7) veins run to end; style arms (7.5P 9/2), veined; F. same, many veins, signal vivid yellow (5Y 8/12) at end, brilliant yellow (5Y 9/9) in middle, very pale purple (7.5P 9/2) in throat. Tiger Cub X Califancy. Iris Howse 2008.

**LOVE IS PATIENT** (Ted Howse, R. 2007). Sdlg. TH-01-PCI-1B. CA, 12" (30 cm), M. S. strong purple (Nickerson 7.5P 5/10) veined darker, brilliant yellow (2.5Y 9/9) in throat; style arms deep red-purple (2.5RP 3/8); F. strong red-purple (2.5RP 4/10), darker veins, underside light purple (5P 8/5), signal brilliant yellow (2.5Y 9/9) to vivid yellow (2.5Y 8/2) edged pale orange-yellow (7.5YR 9/4). Tiger Cub X Califancy. Iris Howse 2008.

**LOVE'S NOT JEALOUS** (Ted Howse, R. 2007). Sdlg. TH-01-PCI-1C. CA, 16" (41 cm), M. S. medium purple-pink (Nickerson 10P 7/7), strong red-purple (10P 5/10) veins; style arms strong red-purple (10P 5/10) fading to medium purple-pink (10P 7/7) at sides; F. strong red-purple (10P 4/10), narrow medium purple-pink (10P 7/7) edge, signal brilliant yellow (2.5 9/9) at sides, vivid yellow (2.5Y 8/12) center. Tiger Cub X Califancy. Iris Howse 2008.

**MANDALAY BAY** (Joseph Ghio, R. 2008). Sdlg. HP-163N3. CA, 10" (25 cm), VE. S. and F. medium yellow; signal blue lined in center, large. EP-241E2: (Star of Wonder x CP-104D2: (PB-349-I2: (PD-250M4: (Eye My Eye sib x PF-159S : (PI-MIX-B, unknown, x PH-231bo: ((Bubbly x (Solid Citizen x (Lighthouse Point x Mission Santa Cruz))) x National Anthem))) x PE-189E: (PG-177G: (PI-MIX-A, unknown, x PI-214-02, Valet sib) x PG-154,

Spanish Don sib)) x Eyes of Blue sib)) X FP-286B: (CP-81Q: (Different Strokes x Magic Carpet Ride) x DP-255G2, Rodeo Gulch sib). Bay View 2008.

**MISSION SAN ANTONIO** (Joseph Ghio, R. 2007). Sdlg. GP-392T2. CA, 10" (25 cm), ML. S. and F. gold base overlaid neon violet, deeper at edges; style arms more violet toned. DF-197H3: (Lifeline x PA-103J2: (PD-229A3: (PF-167Z2: (PH-247spot: (Earthquake x PJ-161B: (Santa Cruz Beach x PL-285U2: (Refugio x PN281A3: (PP-351: (Simply Wild x PR-319M, Camp Capitola sib) x PP-352A: (Big Wheel x California Mystique)))))) x PH-266K: (Las Lomas x PJ-180B2, Aftershock sib)) x PF-153W3, Candid sib) x PC-178big spot: (PE-189M, Baby Blanket pollen parent, x PF-148K2: (Point Santa Cruz sib, x Osocales)))) X EP-246V3, Jabberbox sib. Bay View 2007.

**PAICINES** (Joseph Ghio, R. 2007). Sdlg. FP-215JZ. CA, 10" (25 cm), ML. Deep butterscotch-gold self, small violet signal. DP-203I, Jolon sib, X Weather Eye. Bay View 2007.

**SAN BENECIO** (Joseph Ghio, R. 2008). Sdlg. HP 156-1. CA, 11" (28 cm), M. S. and F. rosy orchid; wine signal. EP-176L, Easter Break sib, X Bowl of Fluff. Bay View 2008.

**SAN JUSTO** (Joseph Ghio, R. 2007). Sdlg. GP-379#. CA, 12" (30 cm), EM. S. and F. gold base, deep mahogany-red plicata markings overall, signal gold sunburst. EP-246O2, Jabberbox sib, X EP-272A3, unknown. Bay View 2007.

**SIZZLING PITCH** (Joseph Ghio, R. 2008). Sdlg. HP-143Y2. CA, 12" (30 cm), ML. S. dark red; style arms ochre; F. dark red, signal ruby in heart, orange steeple line; ochre halo on all petals. FP-260redstyles: (DP-257J2, Inner Faith pollen parent, x DP-242yelam: (BP-193G2: (((Common Sense sib x Umunhum sib) x Face Value sib) x Night Gown) x AP-317K2: (PB-273W2: (Jacks Are Wild x Trancas) x PB-314W2, Copy Boy sib))) X New Blood. Bay View 2008.

**SURVIVOR'S SON** (William Plotner, R. 2008). Sdlg. 01-96-1PC. CA, 14-15" (36-38 cm), ML. S. cornflower blue veined darker, clematis purple midrib, thin flaxflower blue edge; style arms cornflower blue, flaxflower blue center; F. columbine blue veined darker, thin flaxflower blue edge, signal white veined wood violet, dandelion yellow center stripe. Wild Survivor X 96-31: ((Fallen Plums x Pacific Rim) x (Westerlies x Deep Blue Sea)).

**TRIPLE CHERRY** (Mary Barrell, R. 2008). Sdlg. 3TP 17. CA, 20" (50 cm), M. S. cream, almost total cherry-magenta wash, veined darker; style arms cream, center veined magenta; F. dark cherry-magenta, velvety, near black thumbprint signal with veining to edges. Ghio sdlg. X Ghio sdlg., parentage unknown. Barrell 2008/09.

**TRIPLE TWENTIES** (Mary Barrell, R. 2008). Sdlg. 3TP 20. CA, 18" (46 cm), M. S. rosy mauve veined slightly darker; style arms white, light mauve midrib, veins and edges; F. slightly darker than S., deep purple veins radiating from deep purple thumbprint. Ghio sdlg. X Ghio sdlg., parentage unknown. Barrell 2008/09.

**TUMBLER'S HILL** (Dick Payne, R. 2008). Sdlg. DPA-1. CA, 14" (35 cm), M. S., style arms and F. creamy beige, dark veining. Parentage unknown.

**VAIN** (Joseph Ghio, R. 2007). Sdlg. GP-343M3. CA, 11" (28 cm), ML. Light yellow-gold self, large blue lined signal. Sib to Gin and Tonic. Bay View 2007.

**VANILLA CHARM** (Mary Barrell, R. 2008). Sdlg. PLC/1. CA, 17" (42 cm), E. S. flat, creamy beige flushed pale lilac-pink, gold veins, muted lilac dots in center; style arms creamy beige, yellow base, tips flushed very pale lilac-pink, ruffled; F. creamy lemon veined gold, numerous muted lilac dots around and on white halo signal. Parentage unknown, seed from SPCNI. Barrell 2008/09.

**VAUDEVILLE DANCER** (Mary Barrell, R. 2008). Sdlg. BR/MLP01/8. CA, 16" (40 cm), E. S. light mauve-purple; style arms cream, light purple midrib and edges; F. red mauve, veined darker red-mauve, signals small white halo almost completely covered with red mauve and gold veins. Ghio sdlg. X Starshine Bright. Barrell 2008/09.

**WAR ZONE** (Joseph Ghio, R. 2008). Sdlg. HP-143U3. CA, 11" (28 cm), ML. S. medium red; style arms light red; F. medium red, ruby heart, yellow steeple signal. Sib to Sizzling Pitch. Bay View 2008.

**WINO** (Joseph Ghio, R. 2008). Sdlg. GP-366-03. CA, 10" (25 cm), M. S. wine; F. gold ground, wine edge and lines over petal. EP-220-I4: (CP-110J, Lines That Rhyme sib, x CP-107T, Jabberbox pollen parent) X EP-211U4, Eye Catching sib. Bay View 2008.

**YES PLEASE** (Mary Barrell, R. 2008). Sdlg. BR/MLP01/7. CA, 19" (47 cm), E. S. pale lemon veined maroon; style arms lemon; F. pale lemon, light maroon wash deeper at hafts, signal rounded gold at center, heavily veined and dotted light purple, white edge. Ghio sdlg. X Starshine Bright. Barrell 2008/09.



## 2009-10 SPCNI Seed Exchange by Bob Sussman, Seed Exchange Chair

This year's Exchange is just like last years in "how it works". All seed packets are \$1.00, postage and handling is \$1.00, and international postage and handling is \$3.00. So, if you buy 10 packets of seeds and your order is within the U.S., send the SPCNI \$11.00. If you buy 15 packets and your order is within the U.S. send SPCNI \$16. If you buy 20 packets and you want them sent to the U.K. send the SPCNI \$23. That's it! Each seed packet will have a minimum of 10 seeds but generally around 15 to 20.

- What I need:
1. Item#, name, and number of packets per item;
  2. Shipping address;
  3. Check made out to SPCNI.
  4. Email address just in case;
  5. List of substitute seed items also just in case.

Please ensure your orders arrive by January 15<sup>th</sup>. They will be filled by the order in which I receive them. If we are out of a seed item and you have not given us a substitute I will make that big decision. It should take me about a month to fill and get out all your orders. Ok, small lie, I'll get them out as soon as I can, assuming there are no fires at the nursery and nothing gets stolen in a burglary.

Where to send the seed order: Bob Sussman

SPCNI

12142 Alison Dr.

Santa Rosa Valley, California 93012

Email works too but it's hard to send a check: [matilija@verizon.net](mailto:matilija@verizon.net)

The catalog is in alphabetical order. The hybrid seed should all be considered current year unless shown at the end of the description. The species are listed with the rest of the named hybrids, like *I. munzii* is listed under "m". All items should be considered open pollinated unless otherwise stated. Species collected wild are stated as such and garden grown the same. All this should be in the description. The descriptions are taken from the SPCNI Checklist and so have considerably more iris info.

Also, you'll note the second column has a L, M, or S, as in Large, Medium, Small. An L would indicate large seed quantity and a good chance of getting your order filled. An "S" would indicate 2 or 3 orders can be filled, an M would be about 5 to 7, and L would be over 10 orders. Sometimes the L, M, or S maybe highlighted like L. Highlighting indicates new for 2009.

You will note too, that there are two crosses on the list 'Sunol Grade x Mission Santa Cruz' and 'Garden Delight x Stroke of Midnight'. The seedlings from these crosses have held up in our summer heat (typically 10+ days about 100) and can be easily and successfully divided.

Where did the seed come from? Well, besides me, thank the Hudsons, Richard Richards, Jack Finney, Garry Knipe, Kathleen Sayce, and Debby Cole who sent lots and saved the Seed Exchange. Without her seeds we would be sunk! Not to bitch -- well yeah, I'm going to bitch. **We need more people to send seeds.** This is especially true of named hybrids or crosses. If you don't know how to collect seeds, email me and I will let you know what/how to do it. If you'd like to learn how to make your own crosses, email me and I'll send out instructions as long as we get a piece of the action. Now, put me to work. Order some stuff!

All the best,  
Bob Sussman

### SPCNI Seed Listing 2009-10

Item #	Quantity	Details
100	L	Assorted PCIs selected from Debby Cole's garden, taken from large collection of named hybrids, OP. I'm getting these and you should too!

- 110 M **Ami Royale** (Luhrsen, not R.). Sdlg. 1956-5 8" (20cm) S. lavender (Vatican purple) with ice blue margin; F. plum purple, edged lavender, large gold signal, ruffled, velvety and flaring. Amiguita X Santa Paula. Combsie's Gardens 1957
- 120 L **Ami Royale**, same as above, seed from previous years.
- 130 S **Amiguita** (Nies, R. 1947). 12" (30cm) E-M. Blue bitone, dark purple signal on wide flaring falls, edges ruffled. Volunteer I. douglasiana seedling. Lyon, 1951. HC 1948, HM 1951, AM BIS 1970, Mitchell Award 1974.
- 140 M **Bat Boy** (J. Ghio, R. 1995). Sdlg. PF-153R. 14" (36 cm), M. S. brassy gold; F. brassy gold, mahogany signal and red watermark area over top 1/3 of petal. PI-MIX-B, unknown, X PH-242R2: (Temblor sib x ((San Gregorio x (Montara sib x Mission Santa Cruz sib)) x Villa Branciforte sib). Bay View 1995.
- 150 L **Big Money** ((Corralitos x Banbury Princess) x ((Greenbriar Contrast x California Native) x Santa Rita. Bay View 1984. HM 1986, Mitchell Award 1990.
- 160 S **Big Smile** (J. Ghio, R. 1997). Sdlg. PD-204B. 12" (31 cm), EM. Medium gold self, signal slightly lighter. PF-254R: (PI-MIX-R, unknown, x Eagle Eyes) X School Boy. Bay View 1997. HM 2001.
- 170 L *I. bracteata*-self pollinated- Ken Walker
- 180 S **Campaigner** (Ghio, R. 1984). Sdlg. PP-355-O 12" (30cm) ML. Greenish apricot tan, muted violet signal. Gone Native X Camp Capitola. EC 1983, HM 1987. Bay View 1985.
- 190 M **Canyon Bliss** (Emery and SBBG 2006). Lavender and heavily veined.
- 200 L **Canyon Snow** (Emery, selector, R. 1974). Sdlg. SB67-88 17" (43cm) E-M. White self, yellow signal. I. douglasiana X unknown. McCaskill 1975. HM 1976, JC1976, Mitchell Award 1978.
- 210 L **Canyon Snow**, same as above, seed from previous years.
- 220 L *I. chrysophylla*- field collected by Finney '09
- 230 L *I. chrysophylla x douglasiana* – 2004
- 240 L **Copy Boy** (Joseph Ghio, R. 1999). Sdlg. PB-314B. 10" (25 cm), VE-M. Creamy apricot, F. with violet haft blush and edges. PD-243-I, Cross Purpose sib, X PD-264-G3, Santa Rosalita sib. Bay View 1999.
- 250 M **Cozumel** (Joseph Ghio, R. 1996). Sdlg. PF-188M. 13" (36 CM), EM. Bright ochre gold; F. with maroon signal, veins extended outward. Eagle Eyes X PH-266K: (Las Lomas x Aftershock sib). Bay View 1996. HM 1999, AM 2002, Mitchell Medal 2006.
- 260 M **Deepening Shadows** (Ghio, R. 1984). Sdlg. PO-210-E3. 14" (36cm) EM. S. dark purple; F. purple, black sheen. Bay View 1985. HM 1987.
- 270 M **Deepening Shadows**, same as above, seed from previous years.
- 280 L *I. douglasiana* – ex Boring, Oregon, garden-grown, pale lavender with veining. D. Cole '09
- 290 S *I. douglasiana* - wild-collected, Fort Bragg, CA
- 300 M *I. douglasiana* -wild-collected, Sandy, Oregon-light Blue
- 310 L *I. douglasiana* - wild-Leggett Rd x Hwy 1, Hudson '06
- 320 L *I. douglasiana* -Roseburg, Oregon-Jack Finney '09
- 330 L *I. douglasiana* -Pt. Arena Lighthouse-G. Knipe '09
- 340 L *I. douglasiana* -garden-grown, U.C. Berkeley
- 350 L *I. douglasiana* - garden-grown, Boring, Oregon
- 360 L *I. douglasiana* - garden-grown, Cupertino, CA -G. Knipe
- 370 L *I. douglasiana* - garden-grown, Victoria B.C. Canada - dwarf plant-Whitehead
- 380 L *I. douglasiana* - garden-grown, Sandy, Oregon, light blue violet
- 390 L *I. douglasiana* - Sdlg from Santa Barbara Botanical Garden – white with purple styles, '07
- 400 L *I. douglasiana x I. innominata*-Gold Beach Oregon—pod parent has yellow flowers
- 410 M **Drive You Wild** (Ghio, R. 1985). Sdlg PO-229Z 10" (25cm) ML. Red-violet self, gold ray signal. Las Olas X Linda Vista. Bay View Gardens 1986. HM 1988, Mitchell Award 1991, Mitchell Medal 1994.

- 420 L **Egocentric** (Deborah Cole, R. 2005). Sdlg. 95-PG-3. CA, 10-12" (25-30 cm), ML. S. rose; style arms and crests yellow cream; F. rose, small yellow-cream signal with red halo; sometimes branched. Parentage unknown, seed from J. Ghio. The Iris Gallery 2005.
- 430 L **Egocentric** (same as above, seed from previous years)
- 440 S **Father Figure** (Ghio, R.2006) gold ground w/strong henna lining and dotting
- 450 L **Foggy Days** (Ghio, R.2007) White, tinted blue with blue violet lines to distal edge
- 460 L **Garden Delight x Stroke of Midnight** - B. Sussman
- 470 M **Gold Dusted** (C, Jenkins, R. 1990). Sdlg. B11-4D 14" (36cm), M. Purple ground speckled gold. San Gregorio sib x Californian. Shepard Iris Garden 1990.
- 480 M **Gravitas** (Joseph Ghio, R. 2002). Sdlg. CP-108F. CA, 15" (38 cm), EML. S. light lilac; F. lilac, maroon halo around small yellow signal, maroon veining overall. Sib to Clincher. Bay View 2003.
- 490 M **Harland Hand** (H. Hand by D. Lennette, Selector, R. 1989). 11" VE-VL. S.purple blue; F.same, small white signal patch with yellow streak down center; red-based foliage. Portable Acres 1990.
- 500 M ***I. hartwegii*** - wild-Fiddletown CA
- 510 L ***I. hartwegii*** -wild-Sonora CA. -Rocha '04
- 520 S **Heaven Knows** (J. Ghio, R. 1991). Sdlg. PI-MIX-R2. 14" (36 cm), E-L. Solid crimson self, black signal. Unknown parentage. Bay View 1992.
- 530 M ***I. innominata x tenax*** - '04
- 540 S **Joey** (Gatty, R. 1978). Sdlg. CA-1 10" (25cm) M. S. apricot buff (M&P 10-G-6) with very faint garnet venation at midribs; F. deeper buff (11-H-7) with garnet (7-J-6) blotch and veining beyond deep chrome-yellow (9-L-7) signal. Unknown parentage. Bay View 1978. HM 1980.
- 550 L **Lawyer-selected PCI** -blue violet falls with blue signal-04
- 560 M **Laureles** (Joseph Ghio, R. 2001). Sdlg. AP-282K. 14" ML. Medium yellow, hairline white rim on all petals, F. white signal. PC-173-C2. Bay View 2001.
- 570 L **Letter Perfect** (Lois Belardi, R. 2003). Sdlg. SK-1. CA, 13" (33 cm), M. S. white, midrib flushed purple; style arms purple; F. white, veined and washed purple overall, deepening at base, white wire edge, purple signal; ruffled. (Deep Magic x Foothill Banner) X Skylash. Bay View 2004.
- 580 M **Lines That Rhyme** (Joseph Ghio, R. 2002). Sdlg. CP-110H. CA, 13" (33 cm), ML. S. gold with brown veining; F. gold, brown lines and dots radiating to wide brown rim, signal violet tan. Bay View 2003.
- 590 S **Los Californio** (J. Ghio, R. 1988). Sdlg. PL-312-52. 18" (46 cm), ML. Purple, gold sunburst signal. ((Simply Wild x Camp Capitola sib) x (Big Wheel x (Pacific Moon x California Native))) X Miramar. Bay View 1989. HM 1993.
- 610 L **Mascara Brush** (J. Marchant, R. 1990). Sdlg. 3187. 10" (25cm), M. Creamy white ground completely overlaid royal purple (HCC 834) leaving 1/16" white edge, F. lightly ruffled. Sdlg. X Sdlg.
- 620 S **Mendocino Blue** (Robert & Janet Canning, R. 1999). Sdlg. 93-01C-PCN. 11" (28 cm), M. S. hyacinth blue (RHS 91B) with darker (91A) veining; F. slightly darker wisteria blue (92B) with darker (92A) halo and veining, turquoise midrib wash. Parentage unknown; sdlg. purchased at Mendocino Coast Botanic Garden. Iris Gallery 2000. HM 2003, AM 2005, Mitchell Medal 2009.
- 630 L **Mission Santa Cruz** (Ghio, R. 1982). Sdlg PQ-255D 12" (30cm) M. Glowing rosy-red magenta self. Gone Native X Emigrant. Bay View 1983. EC 1982, HM 1985.
- 640 L **Mocha Melody** (Alphild Lind, R. 1992). Sdlg. 87-AL-77. 20" (51 cm), E-M. S. cream with berry midrib 2/3rds way down; F. medium berry, feathering out to cream rim. Simply Wild X Wild Party. Iris Gallery 2001. HM 2004, AM 2006.
- 650 L **Mocha Melody** (same as above. Seed from previous years.)
- 660 S **Monterey Snow** (B. Charles Jenkins, R. 1992). Sdlg. B30-34H. 14" (36 cm), M. Ruffled white with small yellow flash. Santa Rita X Western Movie. Portable Acres 1992.
- 670 L ***I. munzii*** - B. Sussman-OP nursery and Jack Finney- Iris from Adele Lawyer
- 680 M **Native Warrior** (Phillips, R. 1970). 12" (30cm) E. S. light red; F. same with a yellow flash. Amigueta X Claremont Indian. Cordon Bleu 1971. HM 1972, JC 1973, Mitchell Award 1975, ST Wisley 1976, HC Wisley 1978.

- 700 S **Night Gown** (Joseph Ghio, R. 2001). Sdlg. AP-226-Z3. 10" (25 cm), EM. Red black, style arms yellow in heart. Bay View 2001.
- 710 S **Ocean Blue** (Joseph Ghio, R. 2002). Sdlg. CP-56N2. CA, 13" (33 cm), EM. White ground, heavily washed and lined overall with medium blue, F. with yellow dot signal. AP-193ltbl: (PB-247G5: (High Winds x ((Wilder Than Ever sib x Sierra Dell) x unknown)) x Marine Magic) X Pacific Miss). Bay View 2003.
- 720 L **Orchid Resprite x *I. hartwegii australis*** - late blooming (Richards '08)
- 730 L **Pacific Frost** (J.T. Aitken, R. 1990). Sdlg. 82PC7. 20" (51cm), ML. S. white, black line down midrib; F. white, bright blue flash. Unknown parentage. Aitken's Salmon Creek Gardens 1990.
- 740 L **Peacock Gap** (Rigby, R. 1985). Sdlg. 183 12" (31cm) M. S. ruffled pale mauve, darker midrib; F. lightly ruffled mauve, lighter mauve edge and midline ending in a flush of turquoise; ocher signal veined dark violet. From Meek seedlings. Portable Acres 1988.
- 750 L **Peacock Gap** (same as above. Seed from previous years.)
- 760 M **Pretty Boy** (Joseph Ghio, R. 2001). Sdlg. AP-299-L3. 12" (31 cm), ML. Heavily ruffled peach self, F. with small maroon signal. Bay View 2001.
- 770 M **"Plum Luck"** - Gold Dusted seedling-falls purple with lighter edge, gold signal (2<sup>nd</sup> generation seedling from Harry Hill '03 seed) B. Sussman '09
- 780 M **Rancho Corralitos** (Joseph Ghio, R. 2000). Sdlg. PB-392-Q2. 13" (33 cm), ML. S. solid red brown; F. gold with wide deep brown band and dotting, small gold signal. Sib to Extra Credit. Bay View 2000.
- 790 S **Ripple Rock** (Lenz, R. 1963). Sdlg. 11-25-2 11" (28cm) E. S. brilliant yellow; F. same, heavily veined brown, speckled signals. McCaskill 1966. HM 1967, JC 1967.
- 800 S **Rodeo Gulch** (Joseph Ghio, R. 2003). Sdlg. DP-255V3. CA, 14" (36 cm), M. Mango orange self, neon violet F. signal. Bay View 2004. HM 2009.
- 810 L **Roving Eye** (Stambach, R. 1978). Sdlg. #4 12" (30cm) EM. S. light lavender blue; F. lavender blue with white ray pattern in center. *I. munzii* sdlg x unknown. Bay View 1978, HM 1980.
- 820 L **Roving Eye** (same as above. Seed from previous years.)
- 830 L **Ruby Eyes** (Elyse Hill, R. 1998). Sdlg. EJ-15-7. 6" (15cm), E. S. rose, veined darker; style arms light yellow, blended rose; (from first gen. seedling B. Sussman '09)
- 840 L **Sea Gal** (Lois Belardi, R. 1993). Sdlg. PDI-2. 18" (46cm), M. S. medium true blue; F. white ground washed medium true blue, small yellow signal. Bay View 1994, HM 1997, AM 1999.
- 850 L **Short Order** (Ghio, R. 1982). Sdlg. PR-295D 6" (15cm) E-M. S. ochre yellow; F. yellow with brown overlay. Banbury Tapestry X San Vicente. Bay View Gardens 1983. ('04 seed)
- 860 L **Sunburn** (Colin Rigby, R. 1999). Sdlg. 9104. 12" (31 cm), M. Cherry red blushed gold, thin cream edge, F. with gold signal with fine darker gold veining; style arms cherry red blushed gold. Red Bluff x Gold Dusted. The Iris Gallery 2000.
- 870 M **Sunol Grade x Mission Santa Cruz** - Light brown S. and F. with maroon signal-15" -- second generation seeds. B. Sussman '09
- 880 S **Spring Daze** (Ghio, R. 1982). Sdlg. PR-309AA 15" (38cm) ML. S. lavender; F. lavender, veined white; white signal. PU-199,spot: (Corralitos x Banbury Princess) X ((Greenbriar Contrast x California Native) x Santa Rita). Bay View 1983.
- 890 L **Susie Knapp** (Phillips, R. 1970). 12" (30cm) M. Blue gray self. Amigueta X Claremont Indian. Cordon Bleu 1971.
- 900 L ***I. tenax*** - wild-Boring, Oregon
- 910 L ***I. tenax*** -wild-Cathlamet, Washington-rose pink, K.Sayce '09
- 920 L ***I. tenax*** -wild-Silver Star Mt. , Washington light lavender-pink—D.Cole'03
- 930 L ***I. tenax*** - Lewis County- bluish-lavender-Tim Ross '09
- 940 L ***I. tenax*** - wild - lavender
- 950 L ***I. tenax*** - med. Purple-Johnson Mtn Rd, Curry Co., OR -J Finney '09
- 960 L ***I. tenax*** - Silver Star Mountain, Washington -lavender—D.Cole '03
- 970 L ***I. tenax*** - Tarbell Summit of Silver Star Mtn-Clark Co WA- lavender—D.Cole'03
- 980 L ***I. tenax x I. innominata*** - Johnson Mtn Rd, Curry Co, OR - Finney '09

- 990 M *I. tenax x Canyon Snow* - Knipe '05  
**1000 XL Valley Banner** (Hardy, R. 1958). 15" (38cm) M. S. white with narrow purple midrib; F. white veined purple, styles red purple. *I. tenax-I. chrysophylla* hybrid collected. Siskiyou 1968. HM 1970, JC 1970, JC 1971.
- 1010 XL **Valley Banner** (Same as above; seed from previous years)  
 1020 L **Violet Blush** (J. Marchant, R. 1990). Sdlg. 4587. 12" (30cm), ML. S. violet purple (HCC 733/3); F. red violet purple, deeper red violet and blue signal, halo, and veining. Portable Acres 1990.
- 1030 S Western Queen** (Stambach, R. 1967). Sdlg. 52-60 15-16" (38-41cm) M. White self with a few dark veins at the haft. Dark veined sdlg. X Ojai. Foster 1972. HC 1967, HM 1973, Mitchell Award 1976.
- 1050 M **Western Queen** (same as above; seed from previous years)  
 1060 M **Wild Time** (J. Ghio, R. 1986). Sdlg. PM-192R. 10" (25 cm), E. Maize gold self, maroon signal. Roaring Camp X PP-251L: (Simply Wild x PR-319M, Camp Capitola sib). Bay View 1987.
- 1070 S **Wine And Cheese** (Vernon Wood, R. 2001). Sdlg. 99-48. 12" (31 cm), E. Deep wine red, 3/16" light yellow rim on all petals; style arms bright yellow. Iris Gallery 2001.

## The Blind Men and the Iris? Irises?

Do you have many types of irises in your garden or many types of iris? With apologies to Rudyard Kipling in *The Blind Men and the Elephant*, is an iris “very like a deer” (plural deer, iris) or “very like a steer” (plural steers, irises)? According to Jean Witt, either is correct – sort of. The British tend to prefer the plural irises while we Americans tend to prefer the plural iris. Who knows about the Canadians, eh? (Mental note: ask Ted Baker ...) Wikipedia, on the other hand, has a different explanation ([http://en.wikipedia.org/wiki/English\\_plural#fn\\_18](http://en.wikipedia.org/wiki/English_plural#fn_18)): “For multiple plants, iris is used, but irises is used for multiple blossoms”.

Do you have iris species (species iris) in your collection? Even one specie (or is it “even one species)? An article on singulars and plurals found on the web site [http://encyclopedia.kids.net.au/page/en/English\\_plural](http://encyclopedia.kids.net.au/page/en/English_plural) states the following: “Specie and species make a fascinating case. Both words come from a Latin word meaning "kind", but they do not form a singular-plural pair; they are separate non-countable nouns. Coins, such as nickels, euros, and cents are specie, but there is no plural. The idea is "payment in kind". And species, the "kinds of living things", is the same in singular and plural”. Thus specie iris (or “an iris specie”) is a misnomer. Species serves as both singular and plural, and “specie” has an entirely different meaning, unrelated to living things.

Who knew?

Bill McCloy – in the King County (WA, USA) Iris Society Newsletter

## New Members

Marlene Slutsky  
40 Fourth ST. # 113  
Petaluma CA 94952  
[tbotanica@comcast.net](mailto:tbotanica@comcast.net)

Rita Butler  
7919 64th ST. Ct W  
University Place  
WA 98467-3905  
[Mike00Rita@aol.com](mailto:Mike00Rita@aol.com)

Mr. and Mrs. Frank Bresk  
601 Country Club Drive  
Carmel Valley Ca 93924  
[FBRESK@comcast.net](mailto:FBRESK@comcast.net)

Heidi Blyth  
P.O. Box 1097  
Pearcedale Victoria  
Australia  
[heidib333@hotmail.com](mailto:heidib333@hotmail.com)

Janine Cort  
Lower Farm, Wheathill, Lydford on Fosse  
Somerton, Somerset, Ta11 7 HG  
England  
[janine.cort@btinternet.com](mailto:janine.cort@btinternet.com)

Ernst T. De Marie III  
60 Fisher Avenue  
Tuckahoe NY 10707  
[pelarg@aol.com](mailto:pelarg@aol.com)

Truls Jensen & Emma Elliott  
24000 S. Schuebel School Road  
Beavercreek OR 97004  
[info@wildgingerfarm.com](mailto:info@wildgingerfarm.com)

Jack Finney  
1433 SE Kane Street  
Roseburg, OR 97470  
[jfpf@rio.com](mailto:jfpf@rio.com)

Frank Foster  
370 Church Street # 11B  
Salem OR 97301  
[CALSIBE9@gmail.com](mailto:CALSIBE9@gmail.com)

Diane Lukesh  
1300 Rose Park Circle  
Boise ID 83702 - 4440

Shirley Lutz  
2932 Magnolia Street  
Longview WA 98632 - 3547  
[shirleylutz@gmail.com](mailto:shirleylutz@gmail.com)

Iris W. Martin  
9925 18th St. Ct. E  
Edgewood WA 98371  
[imartin12345@msn.com](mailto:imartin12345@msn.com)

Anja Pansin  
Sommerberg 5  
D-72351 Geislingen  
Germany  
[zirpan@freenet.de](mailto:zirpan@freenet.de)

Bob Seaman  
7051 S. 126th St.  
Seattle WA 98178-4337  
[kcisbob@leonineiris.com](mailto:kcisbob@leonineiris.com)

## POSITION OPEN: Northern California Almanac Representative

Are you a northern California member who's been looking for a way to get more involved with SPCNI? Opportunity is knocking. This position can be as little or as much as you want it to be, from just reporting comments of your fellow area members to the Almanac, to aggressively advocating SPCNI to all sorts of groups at the smallest opportunity. Contact any Board member to volunteer --- soon!

***Iris tenax* at Saddle Mountain State Park**



*Iris tenax* along the trail, June 13, 2009.



*Iris tenax* on a rocky slope overlooking the forest below; the central flower spike has two flowers in bloom at the same time, along the trail, June 13, 2009.

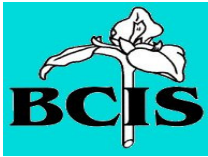


Figure 3: Looking upslope on the west side of the mountain at a meadow of tough-leaved iris, *Iris tenax* and coastal manroot, *Marah oreganus*, a wild cucumber, June 15, 2009.

**Pacific Coast Native Irises at the Rancho Santa Ana Botanical Gardens**  
photos by Mike Monninger







**Iris-istible Victoria, 2011**  
**AIS Spring National Convention**



Government House Gardens, rose garden



Government House Gardens, Mediterranean garden



Finnerty Gardens



Glendale garden pond

**TO WATCH FOR ON SPCNI TREK 2010:**



*Iris tenax x chrysophylla* hybrids, Weaver Road, Coos County, OR. *I chrysophylla* petal frilling and severely recurved style-crests, but *I. tenax* bract habit and lower fall color.



*Iris tenax x innominata* hybrids, Johnson Mountain Rd, just south of Powers, OR.